



2024 CATALOG

Baymro Safety China Limited



Xtreme Max General Trading
Email : sales@xtremegt.ae
Phone : 0553324168



We offer quality reusable and disposable products along with clinically focused solutions to improve patient care and outcomes. The Baymromedical team of experienced and knowledgeable sales representatives and clinical staff wo.



Staff Apparel

BaymroMedical provides our healthcare partners with a wide array of fashionable and functional professional apparel. Our staff apparel perfectly blends durability and value with a fashionable variety of styles and colors.

- Staff hat
- Lab Coats
- Scrubs and Jackets
- Surgical Gowns and PPE



Patient Apparel

By always taking into account the importance of patient comfort and modesty, as well as the need to support and promote patient care, we create products that possess the optimum combination of style, durability and construction.

- Patient Gowns
- Examination Apparel



Pediatric & Infant

Our pediatric and infant apparel and bedding products create a comfortable and caring environment for your youngest patients.

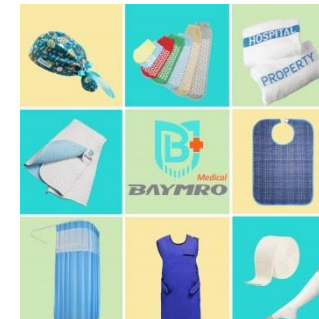
- Pajamas and Gowns
- Infant Apparel and Bedding



Bedding

Our bedding products offer you a wide range of options to meet your unique needs. These high quality, durable products provide cost-effective woven and non-woven solutions for your facility.

- Knitted and Woven Bedding
- Reusable bedding
- Disposable bedding



Comprehensive

We serve a wide range of customers in the industry, and we can utilize our extensive practical experience to recommend and provide you with a more comprehensive range of healthcare products, which include products used by hospital staff in their workplace scenarios as well as products used by patients.



PPE

Different kinds of medical PPE we can share the best suggestions, including safety goggles, safety face shield, safety medical mask, medical gloves, body bags and so on.



Reuse Surgical Cap

Material: 100%Cotton Carton Size (cm): 40×50×55
 Size: One Size Fits Most QTY/Carton (Pcs): 640Pcs
 Gross Weight (kg): 22kg

Color



Reuse Surgical Cap

Material: 100%Cotton Carton Size (cm): 40×50×55
 Size: One Size Fits Most QTY/Carton (Pcs): 640Pcs
 Gross Weight (kg): 22kg



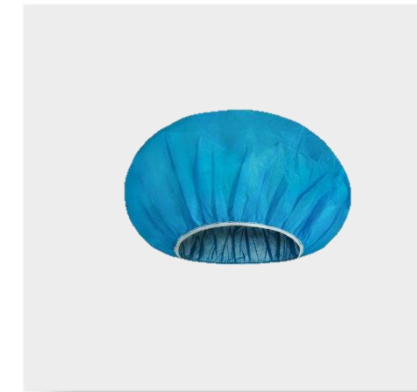
Reuse Surgical Cap

Material: 100%Cotton Carton Size (cm): 40×50×60
 Size: One Size Fits Most QTY/Carton (Pcs): 640Pcs
 Gross Weight (kg): 26kg



Disposable Surgical Cap

- Material: Bonnet SMS 35gsm, Cap top PP non-woven fabric
- Size: One Size Fits Most
- Carton Size (cm): 30×50×52
- QTY/Carton (Pcs): 1500Pcs
- Gross Weight (kg): 11kg



Disposable Bouffant Cap

- Material: Bonnet SMS 35gsm
- Size: 21" , 24"
- Carton Size (cm): 50×36×27
- QTY/Carton (Pcs): 1000Pcs
- Gross Weight (kg): 8kg



Disposable Bouffant Cap

- Material: PP non-woven fabric
- Size: 19" , 21"
- Carton Size (cm): 57×38×27
- QTY/Carton (Pcs): 2000Pcs
- Gross Weight (kg): 7kg

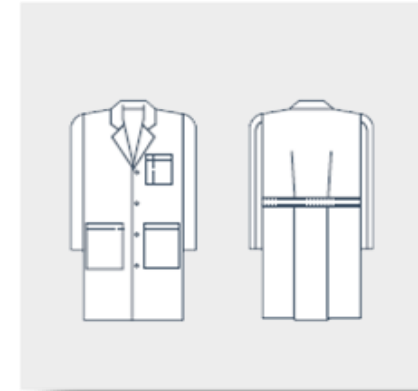


Men's All-Purpose Lab Coat

- Color: white
- Fabric: 100%cotton
- Construction: 21×21
- Yarn: 108×58
- Gram weight: 180±gsm
- Style: Two large front pockets and a breast pocket
- Flat cuff design for easy handling / customizable
- Back slit for comfortable sitting
- Used in: Laboratory ,Medical, Chemistry, Biology, Material Science Engineering, Chemical and Biomolecular Engineering, and Biomedical Engineering.
- Simple styling and features are ideal for cost conscious customers

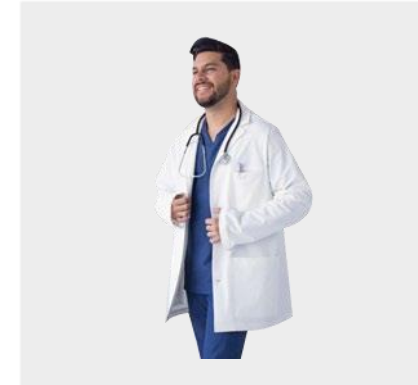
Packing:

- Package: 30pcs/box
- Gross weight:20KG
- Carton size: 53*39*29CM



Men's All-Purpose Lab coat

- Hand access slits
- 5 pockets – 2 lower patch pockets,1 breast, 2 inside – 1 oversized to hold iPad®
- Pen divider on chest pocket
- Pleated back with sewn-down belt
- 65/35 fine line twill with soil release
- SIZE: S-3XL



Men's Short Lab Coat

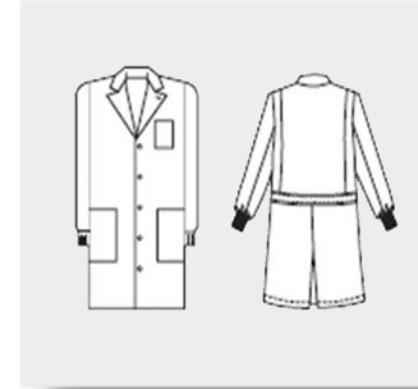
- Lightweight & Breathable
- Liquid Repellent
- Machine Washable
- Classic Fit
- 2 Exterior Deep Drop Pockets
- 2 Exterior Patch Pockets
- 1 Welt Chest Pocket
- 1 Chest Loop for ID Badge, Pager, Etc.
- Traditional Lapel Collar
- Cuff Slit Details for Sleeve Flexibility
- Constructed with Performance Fabric
- Come in both Medical & Consultation Lengths

Our reusable lab coats are the perfect blend of style and function, while performance fabrics enhance the multiple product features and user benefits of our line.



Women's Princess-Style Lab Coat

- Tailored, single breasted style with five-button front
- Features a mock belt, three pockets and set-in sleeves
- 80/20 polyester/cotton poplin treated with a stain release finish
- SIZE: XS-3XL



Unisex Fluid Resistant Lab Coat

- 3 Pockets
- Fluid Resistant
- Button Closure at neck for full coverage
- Deep Back Vent for lap coverage when seated
- Back Pleat for extra movement
- Knit Cuffs 99% Air Textured Polyester, 1% Carbon Fiber (carbon fiber shows as pin striping)
- Sizes: XS-3XL



Women's Short Lab Coat

- Women's fit
- Notch collar
- Three button front closure
- One chest pocket
- Two lower patch pockets
- Front and back darts
- Center back length – 28"
- Made of poly/cotton poplin



Unisex Lab coat

- Antimicrobial fabric protection
- Odor elimination
- Thermal comfort management
- Antistatic performance
- 6 pocket
- Top stitched collar, lapel and front
- Hand access slits
- 78% polyester/20% cotton, 2% X-Static silver twill

Classic blazer styling is just the beginning of the details of this women's consultation coat. Front and back darts for shaping plus a chest pocket as well as two roomy patch pockets make this coat stylish and functional.

Reusable Surgical Gowns

- 360° Wrap around protection
- Saves time: Easy to put on, easy to take off
- Lightweight & durable
- 3 Long ties in the back
- 100% Reusable & washable
- Elastic wrist cuffs
- Generous sizing – fits perfectly over scrubs
- 100% Reversible
- Comfortable neck opening with tape tie
- Used in: doctor, nurse, veterinarians, midwives, etc.

Packing

- Package:30pcs/box
- Gross weight:18.8KG
- Carton size: 53*39*29CM



Reusable Isolation Gowns

- Color: green or blue.
- Fabric: 100% cotton
- Weight: 180G
- Style: Reversed surgical gown with reinforced chest protection, comfort knit cuffs, and adjustable tie
- Function : Remain safe and clean
- Used in : Hospitals, Restaurants, Carpentry shops, Barbershops/Salons, auto shop and Kitchens or during painting and construction.

Packing

- Package:30pcs/box
- Gross weight:18.5KG
- Carton size: 50*29*37CM

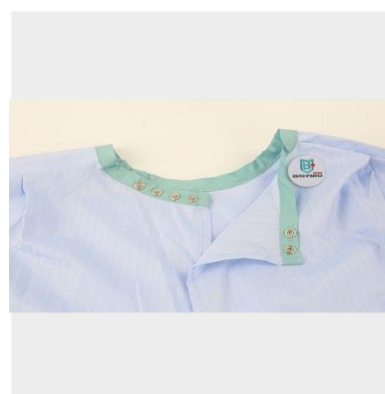
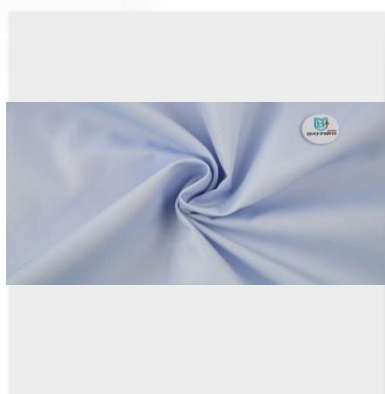
Reusable Surgical Gowns

Liquid-proof, AAMI Level 4, and liquid-resistant, AAMI Level 3, barrier fabrics in critical zones on the gown front and on sleeves, from the elbow to knitted cuff.

- Liquid-resistant fabric in noncritical zones
- The carrier fabric is comprised of 99% polyester/1% carbon. The barrier laminate consists of a 100% polyester knit top and bottom layer with a membrane center.
- Uniquely designed neckline made from moisture-wicking knit fabric.
- Improved sleeve designed to eliminate bulk along with softer tubular style cuff improves glove interface.

Reusable Isolation Gowns

- Gown design allows for comfortable arm movement and generous fit
- Full back with tie closure and white stockinette cuffs
- Non-linting and stain resistant
- Yellow, fluid resistant front, arms and back fabric.



Disposable Nonwoven Surgical Gown

- Weight: 25-65gsm
- Style: Two Knitted Cuffs, Hook And Loop Neck Closure, Single Packed With Paper-Plastic Pouch.
- Color: Blue, Dark blue, Dark green , Pink, Yellow, White4.
- Certificate: CE, FDA, ISO 13485, EN 137955.
- Packing:1pc/sterile pouch,50pcs/carton

Packing

- Package: 30pcs/box
- Gross weight:20KG
- Carton size: 53*39*29CM



Disposable lab coat

- Color: Blue/White
- Fabric: PP+PE
- Gram weight: 40g
- Style: Button closure on placket, knitted cuffs for comfort, sewn cuffs
- Function : Offer the user limited protection against non-chemical spills and dust to clothing underneath.
- Used in : Suitable for food manufacturing, light industry, medical and wherever low particle protective clothing is required.

Packing

- Package:30pcs/box
- Gross weight:3.2KG
- Carton size: 30*30*26CM



Disposable lab coat

- Color: White
- Fabric: SMS
- Gram weight: 35g
- Style: Button closure on placket, knitted cuffs for comfort, sewn cuffs
- Function : Offer the user limited protection against non-chemical spills and dust to clothing underneath.
- Used in : Suitable for food manufacturing, light industry, medical and wherever low particle protective clothing is required.

Packing

- Package:30pcs/box
- Gross weight:3.2KG
- Carton size: 30*30*26CM

Disposable PPE Isolation Gown

- Color: Blue
- Fabric: SMS
- Gram weight: 35G
- Style: Inverted lace-up style, ultrasonic heat sealing at the seams
- Function: Anti-bacteria and waterproof
- Used in: Outpatient clinics, Wards and Inspection rooms of medical institutions, Doorkeepers, Street offices, Communities, Traffic checkpoints Special environmental protection, Rescue protection, Outdoor construction protection, Agricultural and Animal husbandry protection, Pharmaceutical science protection and Survey protection.

Packing

- Package:100pcs/box (Vacuum packaging)
- Gross weight:9.2KG
- Carton size: 65*27*32CM

Plus SMS Lab Coats | Knee Length

- Provide comfort and style;-Made of a soft, breathable fabric, these fire-retardant, fluid-resistant jackets meet requirements for bloodborne pathogens;
- Static free, no clinging; Soft 3-layer SMS fabrics;
- Fluid resistant, breathable;
- Snap front, knit cuffs & collar; 1 breast pocket & 2 hip pockets;
- Available in 4 attractive colors;
- Latex free.

Packing

- Package:100pcs/box (Vacuum packaging)
- Gross weight:10.3KG
- Carton size: 65*27*38CM



Scrub Suit Uniform Disposable

- Size: S-XXL
- Color: Blue
- Material: SMS
- Contains Latex Not made with natural rubber latex
- Extra soft material that feels like real fabric
- Provides optimal comfort and moderate coverage
- Scrub pants have a drawstring waist, one front pocket, and one back pocket
- Shirts have two pockets (one top left, one bottom right)

Premium Lab Coats



- Material: SMS 45gm
- Style:
- Workmanship: Thread sewing or Ultrasonic sewing
- Color : Blue
- Size: S-3XL
- Barrier Protection, Fluid Resistant
- Pockets: 3 Front Pockets
- Knit Cuffs and collar with snap front
- Application: Lab coat offer great personal protection for food processing, cleaning room and other industrial areas.

Disposable Protective Coveralls



- Color: White
- Fabric: PP+PE film
- Size: 165-185cm
- Gram weight: 65g High pitch (high resistance is: anti-static, anti-alcohol, anti-blood. General resistance is: just refers to anti-static)
- Style: Elastic at the wrists, waist and ankles for a better fit and freedom of movement.
- Function: Offer the user limited protection against non-chemical spills and dust to clothing underneath.
- Used in: Hospital, laboratory, workshop, agriculture, painting, manufacturing, food service, industrial and pharmaceutical processing, healthcare settings, cleaning, asbestos inspections, vehicle and machine maintenance, ivy removal, etc.

Packing

- Package: 50pcs/box
- Gross weight: 12.5KG
- Carton size: 60*45*45CM



Impervious Thumb-Hook Gown

- Material: Impervious PE film
- Back style: Open back
- Provides high level protection against blood and bodily fluids.
- Features an impervious film to liquid splashes.
- Thumb-hook design to ensure the gown comfortably stays in place over the wrists while performing tasks.
- Open back for comfort.
- Suitable for decontamination, patient contact and general cleaning tasks.



Disposable Apron

- Material: 100% Polyethylene
- Thickness: 50um
- Size: 145*85cm
- Color: White/Blue
- Unisex
- Single use and must be disposed immediately after completion of a procedure or task.
- It is made from strong polythene, making it practical for effectively protecting clothes from liquid spills and splashes.
- It also features an integrated head hole and waist band to ensure a secure fit.
- EU Class I

Unisex Cotton Short Sleeve Scrub Set

- Fabric: 100% cotton
- Construction: 21×21
- Yarn: 108×58
- Gram weight: 180±gsm
- Style: Two pockets at the hem and one top pocket open hem. The pants have a rear butt pocket and a drawstring waist to adjust the size.
- Used in: doctor, nurse, veterinarians, midwives, etc.
- COLOR : Blackish green/Blue/Purple/customizable

Packaging

- Package:30pcs/box
- Gross weight:17KG
- Carton size: 53*37*29CM



Cotton short sleeve scrubs set includes a V-neck scrub top and a pair of drawstring waist scrub pants. The washable and easy-to-wear fabric gives you exceptional softness and incredible comfort. The scrub top features three roomy storage pockets. The drawstring waist scrubs are looser at the hips and thighs, the scrubs are simple in design (minimum of places for contaminants to hide), easy to wash, and if damaged or soiled beyond repair, are inexpensive to replace.

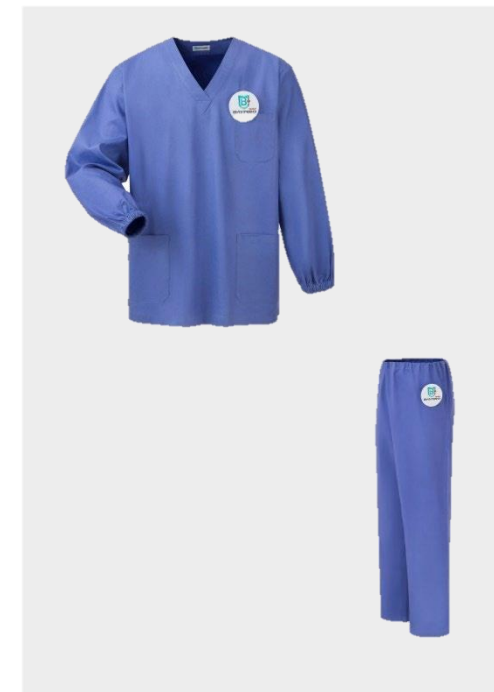


Short Sleeve Scrub Set

- Fabric: Blended
- Composition: 77%T 20%R 3%SP
- Gram weight: 175±gsm
- Style: Two pockets at the hem and one top pocket, open hem, trousers with a back butt pocket, drawstring at the waist to adjust the size.
- Used in: doctor, nurse, veterinarians, midwives, etc.

Packaging

- Package:30pcs/box
- Gross weight:17KG
- Carton size: 53*37*29CM



Cotton Long Sleeve Hospital Scrub Gown Set

- Fabric: 100%cotton
- Construction: 32×32
- Gram weight: 155±gsm
- Style: Two pockets at the hem and one top pocket open hem. The pants have a rear butt pocket and have a drawstring at the waist to adjust the size.
- Cotton Dust-Proof
- Used in: doctor, nurse, midwives, etc.

Packaging

- Package:30pcs/box
- Gross weight:18.8KG
- Carton size: 53*39*29CM

Surgical Scrub Suit Model: BDP4101

- Material: 52%Cotton 45%polyester 2%Spandex
- Color : Navy Blue/ Light Blue/Black
- Size: S-3XL
- Style:
- Timeless V-Neck Style with Knitted Cuffs.
- Skin-Friendly Fabric: Moisture-Wicking, Pill and Wear-Resistant, Easy to Maintain.
- Optimal Fit for Comfort: Loose Yet Secure Around Arms.
- Convenient Chest Pocket and Two Side Pockets for Storage.
- Semi-Elastic Waistband for Effortless Wear.
- Back Pants Pocket for Easy Item Storage and Access.

Surgical Scrub Suit Model: BDP4104

- Material: 99%polyester1% anti-static
- Color: Navy Blue/Ocean Blue/Purple/Gray
- Size: S-3XL
- Style:
- Crafted from polyester, this lab and clinic doctor uniform prioritize comfort and functionality.
- Featuring a V-neck design, this uniform boasts a single chest pocket and two generously sized front pockets, enhancing convenience.
- The trousers are equipped with four pockets in total – two at the front and two at the back – offering ample storage capacity.
- Designed with an elastic waistband and a drawstring, they ensure a comfortable and adjustable fit.

Surgical Scrub Suit Model: BDP4107

- Material: 65%polyester 35%Cotton
- Color : Navy Blue/ Lake Blue/Blue Green/Purple
- Size: S-3XL
- Style:
- Constructed from high-grade polyester-cotton fabric, this long-sleeve surgical scrub set offers exceptional sweat absorption, breathability, and minimal wrinkling for easy maintenance.
- Featuring a comfortable round neckline and robust multi-layer stitching, this set ensures durability and shape retention, maintaining its form after multiple washes.
- The split hem detail not only adds style but also promotes flexibility at the lower hem.
- The double-layered pockets provide organized storage, preventing ink spills from pens or small tools, maintaining tidiness.
- The threaded cuff closures deliver a refined appearance and unhindered movement while preventing liquid flow.
- The trousers, equipped with a flexible semi-elastic waistband, offer convenience and adjustability.

Surgical Scrub Suit Model: BDP4105

- Material: 65%polyester35%Cotton
- Color : Navy Blue/ Lake Blue/Blue Green/Purple
- Size: S-3XL
- Style:
- The V-neck design exudes an understated elegance while providing practicality in the operating room.
- Featuring functional chest pockets with hanging loops for easy access, the suit ensures convenience and durability.
- The side openings grant enhanced flexibility and security, preventing accidental openings during critical tasks.
- The trousers with a semi-elastic waist provide versatility in fitting, coupled with spacious, easily accessible pockets.
- Crafted from a skin-friendly, breathable fabric that resists pilling, wicks moisture, withstands chlorine, and avoids shrinking, this ensemble ensures reliability and comfort.

Surgical Scrub Suit Model: BDP4106

- Material: 90%polyester10%Spandex
- Color : Navy Blue/ Lake Blue/Blue Green/Purple
- Size: S-3XL
- Style:
- The semi-elastic waistband ensures an adaptable and comfortable fit for effortless wear.
- Enhanced by drawstrings featuring durable metal eyelets, this set guarantees durability and a customized fit, offering a personalized experience.
- The reinforced pockets are designed to securely hold small items, ensuring longevity without seam detachment.
- Additionally, the trousers' segmented lines create an illusion of elongated legs, complementing the practical V-neck design with precise stitching and multiple chest pockets, meeting work-related storage needs.
- The cuff closures maintain a neat appearance while preventing liquid seepage.

Surgical Scrub Suit Model: BDP4102

- Material: 90% Nylon, 10% Spandex
- Color : Navy Blue/ Lake Blue/Blue Green/Purple
- /There are 10 color options
- Size: S-3XL
- Style:
- Long or short sleeves can be customized
- Cutting-Edge Fabric for Moisture Absorption and Airflow.
- Handy Chest Pocket for Swift Accessibility.
- Chic Neckline for Modest and Effortless Wear.
- Incorporated Hidden Enlarged Pocket for Practical Elegance.
- Customizable Drawstring Waist for Flexible Sizing.
- Thoughtful Diagonal Pant Pockets for Easy Access and Ample Storage.
- Suited for Diverse Professional Environments: Hospitals, Pharmacies, Cosmetic Clinics, and Beyond.

Surgical Scrub Suit Model: BDP4108

- Material:65%polyester35%Cotton
- Color : Navy Blue/ claret
- Size: S-3XL
- Style:
- The practical V-neck style, coupled with contrasting design elements, offers a comfortable and chic look.
- Designed with deep and wide pockets, these outfits ensure ample storage capacity for everyday essentials while guaranteeing long-lasting durability.
- The adjustable drawstring at the back enables waist modifications, enhancing the attire's form-fitting appeal.
- Crafted from fabric with excellent wrinkle resistance and color retention, these garments offer exceptional comfort and breathability.
- The trousers, featuring a semi-elastic waist, allow for easy adjustments, ensuring comfortable wear.

Surgical Scrub Suit Model: BDP4109

- Material: 90%polyester10%Spandex
- Color : Navy Blue/ claret
- Size: S-3XL
- Style:
- The new medical fabrics are made of ultra-high.
- Multi-functional right side pocket in the clothes of the lower right pocket design of double pockets, one of the pockets can put down a large object items, a pocket with a zipper design, can be put easy to lose small objects, to solve the classification trouble.
- Double slit design on the back hem of the blouse makes it easier to move freely and conveniently with color-coded dates, which is not easy to take off the threads and is more fashionable at the same time.
- Pants left and right side double-layer wide patch pockets, can be classified and stored, can put down the mini tablet and other large portable objects, work more convenient!

Surgical Scrub Suit Model: BDP4112

- Material: 75%Polyester20%Rayon 5%Spandex
- Gram weight: 195gsm
- Color : Green/ There are 10 color options
- Size: S-3XL
- Style:
- Two pockets at the hem and one top pocket open hem. All over elastic waistband with adjustable drawstrings. Slim leg fit.
- Side access zipper plus concealed buckle design, more convenient to use.
- Used in: doctor, nurse, veterinarians, midwives, etc.

Packaging

- Package:30pcs/box
- Gross weight:18.8KG
- Carton size: 53*39*29CM



Surgical Scrub Suit Model: BDP4112-1

- Material: 75%Polyester20%Rayon 5%Spandex
- Gram weight: 195gsm
- Color : Blue/ There are 10 color options
- Size: S-3XL
- Style:
- Two pockets at the hem and one top pocket open hem. All over elastic waistband with adjustable drawstrings. Slim leg fit.
- V-neck design makes it easier to put on and take off
- Used in: doctor, nurse, veterinarians, midwives, etc.

Packaging

- Package:30pcs/box
- Gross weight:18.8KG
- Carton size: 53*39*29CM



Surgical Scrub Suit Model: BDP4113

- Material:72%Polyester20%viscose 8%Spandex
- Gram weight: 200gsm
- Color: Purple/ There are 10 color options
- Size: S-3XL
- Tunic:
- Features a V-neck and short sleeves.
- Equipped with three front pockets: two sizable pockets for essentials like a cell phone or work card and one chest pocket.
- Includes side slits for added comfort and ease of movement.

Trousers:

- Consist of three pockets for convenience.
- Elastic waistband and adjustable hems ensure all-day comfort.
- The tapered legs offer a comfortable and tailored fit.



Surgical Scrub Suit Model: BDP4113-1

- Material:72%Polyester20%viscose 8%Spandex
- Gram weight: 200gsm
- Color: Purple/ There are 10 color options
- Size: S-3XL
- Style:
- Two pockets at the hem and one top pocket open hem. All over elastic waistband with adjustable drawstrings. Slim leg fit.
- V-neck design makes it easier to put on and take off
- Used in: doctor, nurse, veterinarians, midwives, etc.

Packaging

- Package:30pcs/box
- Gross weight:21KG
- Carton size: 53*39*29CM



Nurse Split Suit BDP4103

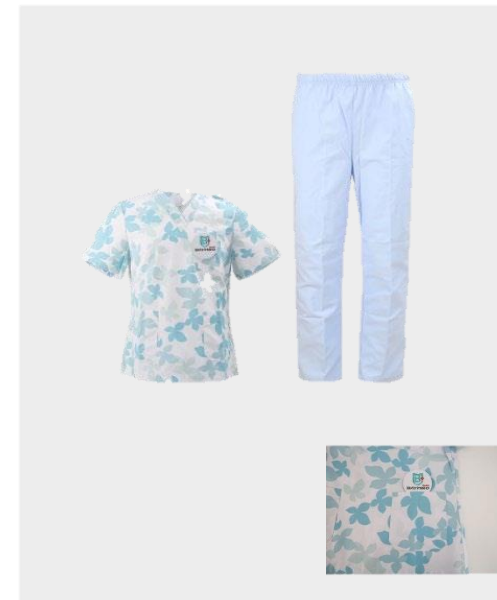


- **Sleeve style:** Sleeveless , Short sleeves , Half sleeves , Long sleeves , etc .
- **Neck style:** O neck , V neck , Polo neck , Mock neck , High neck , etc.
- **Logo Printing:**
- Screen printing: Water printing , Rubber printing ;Heat-Transfer Printing; Discharge printing;
- Digital printing;3D Printing; Puff printing ,Gold/Silver printing, luminous printing etc .
- **Embroidery :** Normal embroidery ; 3D embroidery ; Patch embroidery ;Towel embroidery etc .
- Tag Woven labels; printed labels; weaving chapter; hang tag etc.
- Fabric composition:
- Cotton (100% cotton)
- Cotton / Spandex (95% cotton 5% spandex)
- CVC (65% cotton 35% polyester)
- TC (35% cotton 65% polyester)
- Polyester (100% polyester) Fabric
- **weight :** 180g,190g,200g,210g,220g,260g,300g,320g.
- **Size:**S-3XL
- **Color:** We will provide you with color swatches, Any Pantone color or multi-colors can be customized.

Nurses Wear BDP4010



- **Sleeve style:** Short sleeves /Long sleeves
- **Neck style:** V neck
- **Fabric composition:** TC (35% cotton 65% polyester)
- **Style:**
- Featuring a chest pocket along with two side slip pockets in a dual color-blocked design, it combines practicality with a touch of style effortlessly.
- The adjustable waist, equipped with convenient drawstring buttons, allows for a customizable fit, ensuring comfort and a tailored look.
- Additionally, its easy-care nature simplifies washing and drying procedures, making maintenance a breeze.
- **Size:** S-3XL
- **Color:** White



Nurse Split Suit BDP4114

- **Sleeve style:** Short sleeves /Long sleeves
- **Neck style:** V neck
- **Fabric composition:**
- TC (35% cotton 65% polyester)
- **Weight:** 190gsm
- **Size:**S-3XL
- **Color:** There are 6 color options or Customizable

Packaging

- Package:30pcs/box
- Gross weight:22KG
- Carton size: 53*39*29CM



Nurse Split Suit BDP4103-1

- **Sleeve style:** Short sleeves /Long sleeves
- **Neck style:** Side placket button closure design, more convenient to use.
- **Fabric composition:**
- TC (35% cotton 65% polyester)
- **weight :** 190gsm
- **Size:**S-3XL
- **Color:** There are 6 color options or Customizable

Packaging

- Package:30pcs/box
- Gross weight:22KG
- Carton size: 53*39*29CM



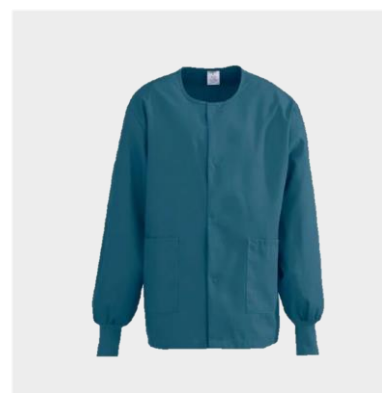
Unisex Snap-Front Warm-Up Scrub Jacket

- Material: 65%Polyester35%Cotton
- Color : Blue or Customizable
- Size: S-3XL
- Style:
- knit cuffs
- two handy lower pockets.
- one pocket includes scissors holder
- collarless neckline
- heavy-weight fabric

Packaging

- Package:40pcs/box
- Gross weight:22KG
- Carton size: 53*39*29CM

A unisex thermal jacket that can be worn with any color fleece for men and women. We know you need to be reasonably comfortable when you're on the job, so they designed this snap front, two-pocket thermal fleece jacket with that in mind.



Roving surgical coat winter

- Material: 77% polyester/23% rayon
- Color : Blue or Customizable
- Size: S-3XL
- Style:
- Classic collar shape neckline stitching ribbing
- 2. Simple and generous, does not affect the activities, to avoid liquid backflow
- 3. Patch pockets on both sides of the hem are double-layered
- 4. Patch pockets at the hem are double-layered
- 5. Sleeve lugs for easy hanging of badges, pens and other items

Your practical and unique extra layer of protection: cardigan-style button front thermal jacket with multiple pockets.



Women's Warm-Up Scrub Jacket

- Material: 77% polyester/23% rayon
- Color : Blue or Customizable
- Size: S-3XL
- Style:
- Modern fit
- Round neck
- 6 covered snaps
- Knit cuffs
- Total of 4 pockets
- 2 front patch pockets each with an outer angled pocket
- Long sleeve
- Double needle stitch details
- Back darts
- Faux partial back belt with snap
- Soil release
- Moisture wicking
- Easy care
- Soft and comfortable

Reusable Patient Gown Woven

- Fabric: 55%Cotton,45%Polyester
- Style:
- Features generously sized patient and IV/telemetry gowns, mother's gown, robe, exam cape, bariatric gowns and coordinating solid pajama pants
- Heavyweight cotton/polyester fabric supports warmth and durability
- Color-coded ties for quick identification and ease of use
- Color: Print
- Size: M-2XL



Reusable Patient Gown Collection is an ensemble designed with the input of hospitals, laundries and patients. The muted tones appeal to patients, as well as complement hospital color schemes and effectively hide stains. The fabric construction processes well for laundries and provides the ultimate in comfort to the wearer.



Reusable Patient Gown Woven

- Color: Green
- Fabric: 65%Cotton,35%Polyester
32S×32S/130×70 plain weave
- Style: I.V. Patient Gowns are distinguished by snap closures on the shoulders and sleeves, which allow for easy accessibility when nursing care is needed.
- Used in: Maternity hospital gown, medical patient gown, pregnancy care home, hospital, clinic, physiotherapy class, chiropractic clinic, acupuncture clinic, chemotherapy, baby or recovering from surgery.

Packaging

- Package:48pcs/box , minimum packing 24 pieces/bag
- Gross weight:21KG
- Carton size: 40*30*56CM



Reusable Patient Gown Woven

- Color: Blue
- Fabric: CVC, 55%Cotton,45%Polyester
- Gram weight: 155G
- Style: Ideal for use throughout hospital and clinical settings, this hospital patient gown features overlap back styling with closures conveniently located at neck and mid-back. Standard cut, back tie closures.
- Used in: Maternity hospital gown, medical patient gown, pregnancy care home, hospital, clinic, physiotherapy class, chiropractic clinic, acupuncture clinic, chemotherapy, baby or recovering from surgery.

Packaging

- Package:48pcs/box ,, minimum packing 24 pieces/bag
- Gross weight:21KG
- Carton size: 42*33*54CM



Reusable Patient Gown Woven

- Color: Blue
- Fabric: 100%polyester
- Gram weight: 155G
- percale SPI, open selvage, disperse print
- Style: I.V. Patient Gowns are distinguished by snap closures on the shoulders and sleeves, which allow for easy accessibility when nursing care is needed.
- Used in: Maternity hospital gown, medical patient gown, pregnancy care home, hospital, clinic, physiotherapy class, chiropractic clinic, acupuncture clinic, chemotherapy, baby or recovering from surgery.

Packaging

- Package:48pcs/box ,, minimum packing 24 pieces/bag
- Gross weight:21KG
- Carton size: 40*30*48CM



Reusable Patient Gown Woven

- Fabric: 100%polyester
- Size: M-2XL
- Style: I.V. Patient Gowns are distinguished by snap closures on the shoulders and sleeves, which allow for easy accessibility when nursing care is needed.
- Used in: Maternity hospital gown, medical patient gown, pregnancy care home, hospital, clinic, physiotherapy class, chiropractic clinic, acupuncture clinic, chemotherapy, baby or recovering from surgery.



Reusable Patient Gown Woven

- Fabric: 100%polyester
- Size: M-2XL
- Style: I.V. Patient Gowns are distinguished by snap closures on the shoulders and sleeves, which allow for easy accessibility when nursing care is needed.
- Used in: Maternity hospital gown, medical patient gown, pregnancy care home, hospital, clinic, physiotherapy class, chiropractic clinic, acupuncture clinic, chemotherapy, baby or recovering from surgery.



Examination Apparel

- Color: Print
 - Size: M-2XL
 - Fabric: 55%Cotton,45%Polyester
 - Style:
 - Features generously sized patient and IV/telemetry gowns, mother's gown, robe, exam cape, bariatric gowns and coordinating solid pajama pants
 - Heavyweight cotton/polyester fabric supports warmth and durability
 - Color-coded ties for quick identification and ease of use
- Versatile designs provide solutions for patients of varying sizes and needs
 - Designs provide extended overlap to promote dignity and comfort, while allowing immediate access with minimal movement.



Knitted women's hospital gown

- Fabric: 100%polyester, reactive printing and dyeing
- Weight: 190g
- Style: I.V. Patient Gowns are distinguished by snap closures on the shoulders and sleeves, which allow for easy accessibility when nursing care is needed.
- Used in: Maternity hospital gown, medical patient gown, pregnancy care home, hospital, clinic, physiotherapy class, chiropractic clinic, acupuncture clinic, chemotherapy, baby or recovering from surgery.

Packaging

- Package:48pcs/box ,, minimum packing 24 pieces/bag
- Gross weight:25KG
- Carton size: 41*64*42CM



Open Back Nightgowns & Hospital Gowns

- Fabric: 100%cotton, reactive printing and dyeing
- Weight: 200g
- Style: I.V. Patient Gowns are distinguished by snap closures on the shoulders and sleeves, which allow for easy accessibility when nursing care is needed.
- Used in: Maternity hospital gown, medical patient gown, pregnancy care home, hospital, clinic, physiotherapy class, chiropractic clinic, acupuncture clinic, chemotherapy, baby or recovering from surgery.

Packaging

- Package:48pcs/box, minimum packing 24 pieces/bag
- Gross weight:25KG
- Carton size: 41*64*42CM



Open Back Nightgowns & Hospital Gowns

- Fabric: 100%cotton
- EASY ACCESS DRESSING: This adaptive clothing for men is perfect for seniors with decreased movement, especially in the upper arm. The back overlap and shoulder connections allow for easy dressing and easy disrobing, especially regarding assisted dressing. Its practicality is why it's often used as hospital gowns for men or as elderly pajamas. Because it opens completely and allows for a patient's arms to be slid into the sleeves, it's a flannel nightgown for those who are wheelchair bound.
- ROOMY FIT: By providing hospital gowns with connections on shoulders, our elderly clothing avoids pressure points. It's a dress with open back features in order to provide men's plus size gowns that offer extreme comfort and discretion. We make the ideal men's flannel nightgown because we understand how important it is to deliver roomy sleepwear.
- USES: This nightgown for men can be used as warm nightgowns, a patient gown, exam gowns, nightgowns sleepwear, flannel nightgowns, hospital gowns, or patient gowns long sleeve.



Open Back Nightgowns & Hospital Gowns

- Color: Print
- Fabric: 55%Cotton,45%Polyester 32S×32S/130×70 plain weave
- Style: I.V. Patient Gowns are distinguished by snap closures on the shoulders and sleeves, which allow for easy accessibility when nursing care is needed.
- Used in: Maternity hospital gown, medical patient gown, pregnancy care home, hospital, clinic, physiotherapy class, chiropractic clinic, acupuncture clinic, chemotherapy, baby or recovering from surgery.

Packaging

- Package:48pcs/box , minimum packing 24 pieces/bag
- Gross weight:20KG
- Carton size: 40*30*50CM

Pediatric patient gown

- The 100% polyester comfort knit construction is super comfortable and breathable for the wearer.
- The Children's Sleeping Gown Collection gowns and PJs were designed for ages 1 up through 12 years.
- The easy color coordination within the set and with the solid color PJ Pants allow the caregiver to easily grab the correct size.
- The vibrant colors in the prints are colorfast, designed to look fresh over their lifetime.
- The polyester construction is durable for longevity, and also allows for faster drying time in the laundry.



Pediatric patient gown

- Fabric: 100% Polyester
- Style:
 - Woven
 - Flame Retardant
 - Available in Gown, IV Gown and PJ Pants
 - Color coded by Size

Packaging

- Package: 24 pieces/bag
- Gross weight: 9.5KG
- Carton size: 45*25*17CM

Pediatric patient gown

- Fabric: 100% Polyester Comfort Knit
- Style: I.V. Patient Gowns are distinguished by snap closures on the shoulders and sleeves, which allow for easy accessibility when nursing care is needed.
- Used in: Maternity hospital gown, medical patient gown, pregnancy care home, hospital, clinic, physiotherapy class, chiropractic clinic, acupuncture clinic, chemotherapy, baby or recovering from surgery.

Packaging

- Package: 24 pieces/bag
- Gross weight: 8.5KG
- Carton size: 40*25*17CM



Baby Suit

- Fabric : 100% Cotton
- Color: White, Blue, Pink
- SIZES: 3 - 12 months
- Style:
- Offered in long and short sleeve, and gripper styles
- Front placket offers both lanyard and button closures



Baby Blanket

- Size: 140*100cm
- Grammage: 800g
- Package size: 30CM*30CM*5CM
- Color: Blue/Pink/Gray/Yellow/Khaki



- Reasonable size to wrap the baby better.
- The fabric is soft and cozy to care for the baby's delicate skin.
- Warm color combinations provide babies with a happier mood.

Baby Hat and Mittens

- Fabric : 100% Cotton
- Color: White, Blue, Pink, customizable
- Size: Newborn



- Prevent Scratches: This set of infant beanie and gloves can effectively prevent babies from accidentally scratching their head or face. Provide children with a more comfortable and healthy sleep, protecting their delicate skin.
- Baby Hat and Mittens: This is a set of baby hat and mittens. Clothing accessories specifically designed for newborns. Elastic and easy to put on and off. Suitable for infants aged 0-1. And both boys and girls can use it.
- Baby Gloves: Baby mittens can be stably worn on infant's hands. It is not easy for a active baby to accidentally take off it. Gloves do not restrict the extension of a baby's fingers. Fingers can freely grasp and grip.

Infant Pillow

- Size: 25*16cm
- Height: 3-5cm
- Material: 100% cotton
- Filling: 100% polyester fiber
- Single product weight 0.07KG
- Can also be customized according to your needs



Draw sheets for hospital bed

- Woven construction of 180 threads per square inch to ensure durability as well as softness.
- Bleached with hydrogen peroxide for the whitest, most consistent product possible.
- Intimately blended yarns made of 55% cotton and 45% polyester for superior shrinkage control.
- Draw sheets and Pillowcase Are Long-Wearing and Ultra-Smooth.
- Give your beds that clean, crisp look you desire.



Thermal Blankets

- 100% cotton for comfort and softness
- Available in a variety of weights to meet your needs
- Thermal cell construction provides warmth without extra weight
- Blended option available for added durability
- Size: Customizable

Hospital Knit Fitted Sheet

- Color: White
- Material: Weft knit, 100% polyester T30×75D, MVS × Filament, Weft knit, Open Selvage, Disperse Dye, Circular
- Weight: 156gsm
- Used in: Hospitals

Packing:

- Package: 24 pcs/box
- Gross weight: 15.5KG
- Carton size: 54*46*28CM



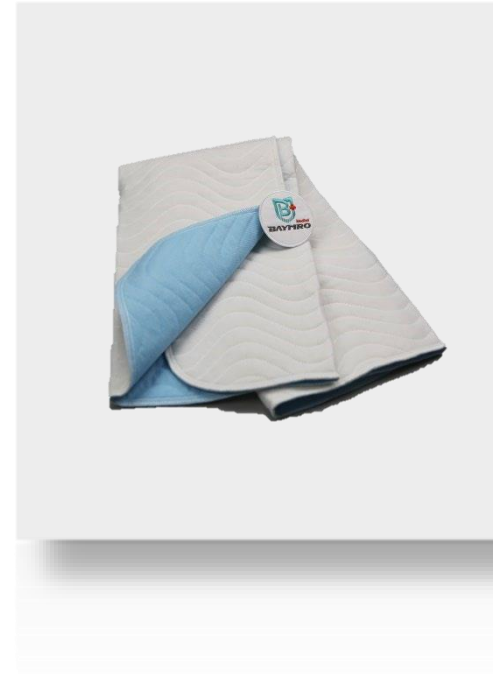
Thermal Blankets

- 100% POLYESTER for comfort and softness
- Available in a variety of weights to meet your needs
- Thermal cell construction provides warmth without extra weight
- Blended option available for added durability
- Size: Customizable



Vinyl Waterproof Pillow Cover

- These pillow covers are way to decrease allergens in pillows, while protecting from moisture.
- It does have the advantage of just wiping clean without removing it from the bed.
- Waterproof cover also inhibits the growth of mold mildew, fungi and odor causing bacteria.
- Waterproof Protectors for Longer Lasting Pillows.
- Wipes Clean easily with a damp cloth.
- The zippered closure ensures a secure fit that stays in place during use, protecting your pillows from spills and stains and keeping them looking new for longer.
- Ideal For Hotels, Homes, Guest Rooms school etc.



Hospital Reusable Waterproof Incontinence Diaper Pad

- Product: five-layer thickened nursing pad
- Product material: Surface layer, sandwich layer, absorbent layer: 100% polyester fiber
- Waterproof layer: TPU waterproof and breathable membrane
- Bottom: 100% polyester
- Size: 70*90CM

Packaging:

- Package: 40 pieces/box
- Gross weight: 16.2KG
- Size: 30*30*40CM



Medical mattresses

- Technology: Foam
- Structure: Multi-layer
- Function: Anti-decubitus, washable, waterproof
- Size: Customizable
- Employs "Glide Sheet Processing" to treat urethane foam and apply a smooth.
- It reduces a risk of pressure ulcer because of keeping the person from sliding when back raising.
- Providing Support for Lumbar, posterior, and femoral region by area
- Easy to Move by unique 2-layer
- Stretch with Wave Patterned Structure
- Anchor Support Keeps Posture



Waterproof Functional Bedsheet

- Color: White
- Material: Knitted fabric + waterproof coating
- Waterproof, anti-mold, anti-bacterial more suitable for ward care environment use
- Used in: Hospitals

Packing:

- Package: 24pcs/box
- Gross weight: 15.5KG
- Carton size: 54*46*28CM



Disposable Nonwoven Incontinence Pad – Chux Pad

- Fabric composition: non-woven fabric, absorbent paper. Fluff pulp, polymer absorbent resin, PE leak-proof film
- Weight:45gsm
- Size:60*45CM
- Use on: bedding or furniture (such as office chairs, sofas, loveseats, recliners, dining chairs or wheelchairs)

Packaging :

- Box size:36*29*25
- Number: pieces/box
- Gross weight: 7KG



Disposable Bed Sheet

- Fabric composition: non-woven fabric PPP
- Fix method: Flat Cover
- Weight: 35 - 45gsm
- Size: Based on inquiry
- Use on: bedding



Disposable Nonwoven Incontinence Pad – Chux Pad

- Fabric composition: non-woven fabric, absorbent paper. Fluff pulp, polymer absorbent resin, PE leak-proof film
- Weight:33gsm
- Size: 80CM*150CM
- Use on: bedding or furniture (such as office chairs, sofas, loveseats, recliners, dining chairs or wheelchairs)

Packaging :

- Box size:36*29* 40
- Number: pieces/box
- Gross weight: 10KG



Disposable Bed Sheet

- Fabric composition: non-woven fabric, PE leak-proof coating
- Fix method: Elastic Cover
- Weight: 35 - 45gsm
- Size: Based on inquiry
- Use on: bedding



Disposable pillow case

- Size: 12"*17"
- Material: Nonwoven, 100%Polyester, 30gsm
- These pillow covers are way to decrease allergens in pillows, while protecting from moisture.
- It does have the advantage of just wiping clean without removing it from the bed.
- Waterproof cover also inhibits the growth of mold mildew, fungi and odor causing bacteria.
- Waterproof Protectors for Longer Lasting Pillows.
- Wipes Clean easily with a damp cloth.
- The zippered closure ensures a secure fit that stays in place during use, protecting your pillows from spills and stains and keeping them looking new for longer.
- Ideal For Hotels, Homes, Guest Rooms school etc.



Disposable pillow case

- Size: 12"*17"
- Material: Nonwoven, 100%Polyester, 30gsm
- These pillow covers are way to decrease allergens in pillows, while protecting from moisture.
- It does have the advantage of just wiping clean without removing it from the bed.
- Waterproof cover also inhibits the growth of mold mildew, fungi and odor causing bacteria.
- Waterproof Protectors for Longer Lasting Pillows.
- Wipes Clean easily with a damp cloth.
- The zippered closure ensures a secure fit that stays in place during use, protecting your pillows from spills and stains and keeping them looking new for longer.
- Ideal For Hotels, Homes, Guest Rooms school etc.



Disposable pillow case

- Size: 20"*26.5"
- Material: PE film to 1.25oz per square yard PP fabric, PP fabric with antimicrobial impregnated into film
- These pillow covers are way to decrease allergens in pillows, while protecting from moisture.
- It does have the advantage of just wiping clean without removing it from the bed.
- Waterproof cover also inhibits the growth of mold mildew, fungi and odor causing bacteria.
- Waterproof Protectors for Longer Lasting Pillows.
- Wipes Clean easily with a damp cloth.
- The zippered closure ensures a secure fit that stays in place during use, protecting your pillows from spills and stains and keeping them looking new for longer.
- Ideal For Hotels, Homes, Guest Rooms school etc.



Disposable pillow case

- Size: 18"*24.5"
- Material: PE film to 1.25oz per square yard PP fabric, PP fabric with antimicrobial impregnated into film
- These pillow covers are way to decrease allergens in pillows, while protecting from moisture.
- It does have the advantage of just wiping clean without removing it from the bed.
- Waterproof cover also inhibits the growth of mold mildew, fungi and odor causing bacteria.
- Waterproof Protectors for Longer Lasting Pillows.
- Wipes Clean easily with a damp cloth.
- The zippered closure ensures a secure fit that stays in place during use, protecting your pillows from spills and stains and keeping them looking new for longer.
- Ideal For Hotels, Homes, Guest Rooms school etc.



Medical Slipper Socks

- Product Description:
- Slip-resistant treads used in hospital settings to help prevent accidental falls
- Lightweight, soft cotton knit provides optimal warmth and comfort
- Stretchable material accommodates most feet
- Available in 5 sizes/colors
- Sizing

Women

4-6 Small
6-7 Medium
8-10 Large
11-13 XL

Men

5-6 Medium
7-9 Large
10-12 XL
12-13 XXL



Adult Waterproof Bib

- Product Description:
- 1TM Layer: 100% brushed polyester.
- 2TM Layer : blue PVC barrier.
- Size: 45 x 90 cm.
- Velcro closure.
- Taped edges all around.
- 100% polyester.
- Color: Light blue chevron.



Tubular elastic support bandage

- Material: 100% Cotton or Rubber & Cotton
- Weight:
- GSM: 180g, 200g, 260g, 280g, 300g
- Sterile: None
- Size: customizable
- Composition: 100% Cotton
- Function : Medical Health Services



Single Side Lead Apron

Description-0.5mm lead equivalent Apron

- Designed to provide efficacious shield against radiation during X-ray process.
- Provides maximum comfort, very less fatigue and freedom of movement.
- With Pocket. · Unisex size (100 x 60cm- Standard size)
- Supplied with Hanger.
- Complete Protection, Classic Design
- Complete Frontal overlap for improved fit
- Equal protection of shoulder panels
- Easy slips on off- Comfortable to wear for long duration

A handy hidden outside pocket helping to ensure easier and more thorough cleaning of the aprons. Front hook and loop closure belt which provides ergonomic support. Lightweight design

Disposable Face Shields

- Visor Material: Polyethylene
- Face Shield Visor Coating: Anti-Fog
- Strap Material: Elastic
- Reusability: Disposable
- Standards: CE EN166



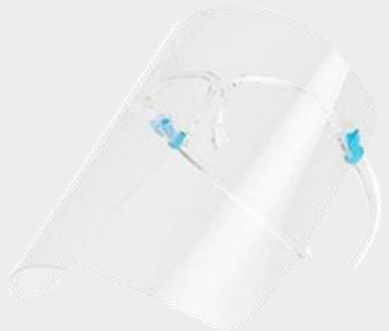
Reusable Face Shields

- Visor Material: Polyethylene
- Face Shield Visor Coating: Anti-Fog
- Strap Material: Elastic
- Reusability: Reusable



Disposable Face Shields

- Visor Material: Polyethylene
- Face Shield Visor Coating: Anti-Fog
- Eye wearing
- Reusability: Disposable



Reusable Face Shields

- Visor Material: Polyethylene
- Face Shield Visor Coating: Anti-Fog
- Size Adjustable Material: PP
- Reusability: Reusable
- Standards: CE EN166



Safety Glasses

- Lens Color: Clear/Dark
- Lens Material: Impact rated & UV protected polycarbonate lens
- Glasses Frame Style: Wraparound with Side Protection
- Frame Type: Half-Frame
- Frame Color: Black/Blue or Customized
- Adjustable Arm Length: Yes
- Includes Scratch-Resistant Lens Coating: No
- Includes Anti-Fog Lens Coating: Yes
- Includes Padded Nose Piece: No
- Standards: ANSI Z87.1-2015; CE EN 166



Over-the-Glasses (OTG) Safety Glasses

- Lens Color: Clear
- Lens Material: Polycarbonate provide 99.9% UV protection
- Glasses Frame Style: OTG
- Frame Type: Frameless
- Frame Color: Clear
- Adjustable Arm Length: No
- Includes Scratch-Resistant Lens Coating: No
- Includes Anti-Fog Lens Coating: Yes
- Includes Padded Nose Piece: No
- Standards: ANSI Z87.1-2015; CE EN 166



Safety Goggle

- Lens Color: Clear
- Lens Material: Impact rated & UV protected polycarbonate lens
- Traditional Frame Material: PVC
- Frame Color: Clear
- Venting Type: Indirect
- Includes Scratch-Resistant Lens Coating: No
- Includes Anti-Fog Lens Coating: Yes
- Includes: Elastic Strap
- Eyewear Size: Universal
- Chemical Splash/Impact Resistant, ANSI Dust/Splash Rating D3
- Standards: ANSI Z87.1-2015; CE EN 166



Autoclavable Safety Goggle

- Lens Color: Clear
- Lens Material: Impact rated & UV protected polycarbonate lens
- Wraparound Frame Material: Thermoplastic rubber
- Venting Type: Indirect ventilation protect against chemical splashes
- Includes Scratch-Resistant Lens Coating: Yes
- Includes Anti-Fog Lens Coating: Yes
- Includes: Non-irritant silicone strap
- Eyewear Size: Universal
- Autoclavable goggle for cleanroom
- Standards: ANSI Z87.1-2015; CE EN 166





KN95 Mask Model: REP9330V

- Material: Nonwoven
- Features: Lightweight, vertical folded easily. Nose foam and nose clip ensure comfortable.
- Standard: EN14683 TYPE IIR

Color



KN95 Mask Model: REP9330V

- Material: Nonwoven
- Certificate: GB 2626-2019
- Features: Lightweight, vertical folded easily. Nose foam and nose clip ensure comfortable.
- Article No.: **REP9330** Without valve



FFP2 Mask Model: REP9313V

- Material: Nonwoven
- Certificate: CE EN149
- Features: Good elasticity headband, molded. Against solid and liquid particles of average toxicity.
- Article No.: **REP9313** Without valve



N95 Mask Model: REP6001V

- Material: Nonwoven
- Certificate: NIOSH 95
- Features: : Lightweight, vertical folded easily. 95% filtration effective against particulate aerosols free of oils.
- Article No.: **REP6001** Without valve



N95 Mask Model: REP9001V

- Material: Nonwoven
- Certificate: NIOSH 95
- Features: Headband, molded. 95% filtration effective against particulate aerosols free of oils. Latex-free elastic ultrasonic welded to cup.
- Article No.: **REP9001** Without valve



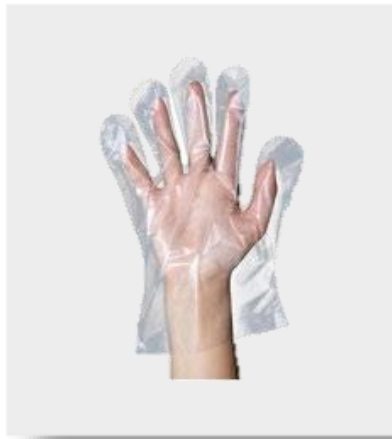
FFP3 Mask Model: REP311V

- Material: Nonwoven
- Certificate: CE EN149
- Features: Ear straps, fish shape to avoid mouth touch the mask, cut to fit the face shape.
- Article No.: **REP311V** Without valve



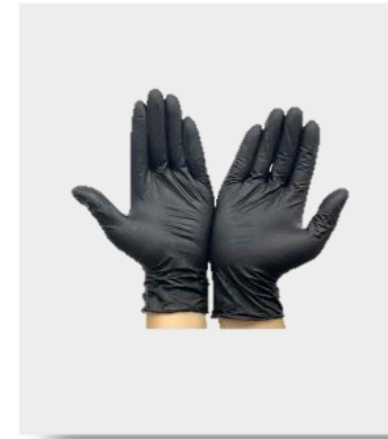
FFP3 Mask Model: REP9319V

- Material: Nonwoven
- Certificate: CE EN149
- Features: Headband, molded. 4 pcs of adjustable clip. Inside cup with soft PU seal rubber to avoid leakage.



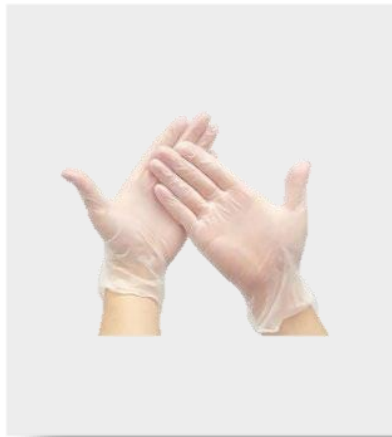
Disposable PE Gloves

- Powder free, FDA certificated.
- Thickness: 0.10mm, anti-abrasion, anti-impale.
- Box of 100.
- Harsh fingers, Suitable for industry /lab /food production /medical.
- Size: XS, S, M, L, XL.
- Color: Clear



Disposable PVC Gloves

- Powder free, FDA certificated.
- Anti-oil, anti-acids/alkalis, anti-impale
- suitable for industry/ lab /food production /medical
- Size: XS / S /M/L/XL.
- Color: Clear/ Black



Disposable Vinyl Gloves

- Powder free, FDA certificated.
- Thickness: 0.10mm, anti-abrasion, anti-impale.
- AQL= 4.0 Box of 100
- Harsh fingers, Suitable for industry /lab /food production /medical.
- Size: XS, S, M, L, XL.
- Color: Ivory



Disposable Latex Gloves

- Powder free, FDA certificated.
- Thickness: 0.10mm, anti-abrasion, anti-impale.
- AQL= 4.0 Box of 100
- Harsh fingers, Suitable for industry /lab /food production /medical.
- Size: XS, S, M, L, XL.
- Color: White/ Black



Disposable Nitrile Gloves

- Powder free
- Thickness: 0.08mm, suitable and flexible.
- AQL=2.5, Meet SPDA certification
- Harsh fingers, suitable for industry/lab/food production/medical
- Size: S, M, L, XL.
- Color: Blue/ Black/ White



Disposable Rubber Gloves

- Powder
- Thickness: 0.10mm, anti-abrasion, anti-impale.
- Harsh fingers, Suitable for industry /lab /food production /medical.
- Size: XS, S, M, L, XL.
- Color: Colorful



Surgical Clogs

- Model: FTP4020A
- Material: New design EVA. Light, soft and super elastic.
- Air holes 4 outside and 7 inside.
- Cap design anti-slip, anti-puncture, anti-liquid splash.
- Special design anti-slip outsole.
- Low temperature sterilizable.
- Color: Green, Blue, Pink, Purple, White, Light Blue.



Surgical Clogs

- Model: FTP4039
- Material: New design EVA + Rubber. Light, soft and super elastic.
- Shoe bed has massage particles design.
- Air holes.
- Cap design anti-slip, anti-puncture, anti-liquid splash.
- Super anti-slip design.
- Low temperature sterilizable.
- Color: Green, Pink, Blue, White, Light Blue, Purple, Yellow, Black.

Color



Surgical Clogs

- Model: FTP4033
- Material: EVA. Light, soft.
- Air holes 8 each side.
- Thickened sole design, long standing not tired.
- Low temperature sterilizable.
- Color: Green, Light Green, Purple, White, Light Blue.

Color



Surgical Clogs

- Model: FTP4037
- Material: EVA. Light, soft.
- Without Holes.
- Thickened sole design, long standing not tired.
- Low temperature sterilizable.
- Color: Green, Pink, Yellow, Blue, Light Blue, Black.

Color





Surgical Clogs

- Model: FTP4057
- Material: TPE. Light, soft.
- Without Holes.
- Thickened sole design, long standing not tired.
- High temperature 135°C sterilizable.
- Suitable for O.r., ICU, OB.
- Color: Green, Blue, White.

Color



Surgical Clogs

- Model: FTP4053
- Material: TPE. Light, soft.
- With Holes.
- Thickened sole design, long standing not tired.
- High temperature 135°C sterilizable.
- Suitable for O.r., ICU, OB.
- Color: Green, Blue, White.

Color



Surgical Clogs

- Model: FTP4030
- Material: New design EVA + Rubber. Light, soft and super elastic.
- Shoe bed has massage particles design.
- Ankle belt available if needed.
- Air holes.
- Cap design anti-slip, anti-puncture, anti-liquid splash.
- Super anti-slip design.
- Low temperature sterilizable.
- Color: Green, Pink, Blue.

Color



Surgical Clogs

- Model: FTP4020C
- Material: EVA. Light, soft.
- Without Air holes. But holes can be open if needed.
- Ankle belt available if needed.
- Low temperature sterilizable.
- Color: Green, Pink, White, Blue, Black.

Color



Disposable SMS shoe covers

- Color: Blue/White
- Material: SMS non-woven fabric
- Size: 15*45CM 1pc/5g
- Function: Keep floors and sidewalks clean from contaminants on shoe soles
- Used in: Medical, Construction, Food processing, Pharmaceuticals, Environmental cleanup, Beauty, Contract and Installation work, Movers, and more.

Packing

- Package: 100pcs/bag , 20bags/box , 2000pcs/box
- Gross weight: 9.8KG
- Carton size: 61*47*34CM

Patient Shoes

- Material: EVA
- Color: White
- Sizes: 36 – 46
- Made of molded EVA foam without any smell and bacteria resistant
- Super lightweight to make you feel relaxed.
- Slip resistant outsole.
- Reusable, washable. Open toe preferred, Non Porous in the upper or outsole, (no flip flop design).
- Various color available

Surgical Clogs

- Model: FTP4030
- Material: New design EVA + Rubber. Light, soft and super elastic.
- Shoe bed has massage particles design.
- Ankle belt available if needed.
- Air holes.
- Cap design anti-slip, anti-puncture, anti-liquid splash.
- Super anti-slip design.
- Low temperature sterilizable.
- Color: Green, Pink, Blue.

Rubber PVC Boots

- Materials: White PVC upper and outsole. Easy to clean in complex project.
- Anti-slip, resistant to oil and acids/alkalis, anti-shock, abrasion resistant.
- Size: 36 – 47
- Color: White
- Height: 30cm or 38cm



5L Safety box

- Volume: 5 Liter Syringe hold diameter: 38mm
- Nominal syringe capacity: 150 units
- Materials: White board, recycled board & virgin fiber, 700gsm, thick 0.9mm
- Size: 285*150*120mm Weight empty: 200(g)
- Surface: Vamish/Gloss film
- Color: White/Yellow
- Product Life: 3 years

Packing

- Package:100pcs/CTN
- Gross weight: 21KG
- Carton size: 57.5*28*26CM



Medical Waste Bags

- Material: PP/PE composite material
- Color: transparent, red, yellow, blue
- Characteristics: high temperature resistance, strong toughness, not easy to puncture, strong load bearing
- Usage: used in medical treatment, disease control, scientific research, industrial biology laboratory, etc.



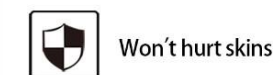
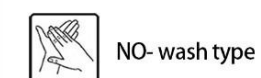
Medical Sharps Box

- Volume: 0.5L/1L/2L/3L/4L/5L/6.5L/8L/10L/15L
- Materials: Polypropylene plastic
- Round lid design
- Color: Red/Yellow
- Applied in hospitals, outpatient clinics, social welfare, laboratories and other places.



Hand Sanitizer

- Volume: 100ml, 500ml, 5L
- CE, MSDA, FDA certified
- 99.99% effective sterilization, no washing and quick drying



First Aid Kit

- Material: PU leather, EVA
- Size:14.3*11.6cm/23*14*6cm/23*19*7.5cm/32.3*27*11cm
- Application: Outdoor travel, car rescue, daily work, family routine
- Features: waterproof, earthquake resistant, heat insulation, corrosion resistant